



EXCEL CELL ELECTRONIC CO.,LTD.

2021 First Quarter
Earnings Conference

May 07,2021

EXCEL CELL ELECTRONIC CO., LTD.



Agenda

- Company profile
- Applications
- 1Q2021 Financial Results
- Q&A



Company profile



Our History

1980

1990

2000

2005

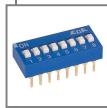
2016

2020



1981

ECE founded
Capital \$100,000



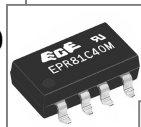
1983

Dip Switch
Reed relay



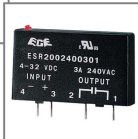
1990

Terminal Block



1997

MOS & SSR relay



2001

Public Listed in
Taiwan stock market



2001

Fuse &
Micro Switch



2004

Merged T-Top
Stamping
Connector

GOODSKY



2005

Merged Goodsky
Mechanical relay



2016

Industrial Control
switch



NEOCENE

2018

Merged NEOCENE
Stepping motor



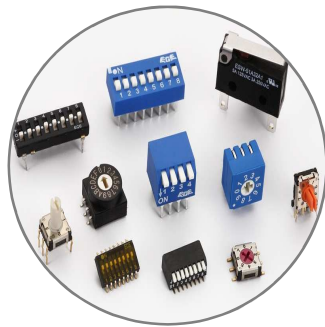
Corporate Products

ECE Brand / Goodsky Brand for mechanical relay



Relay

- Mos relay
- Solid State relay
- Reed relay
- Reed Sensor
- Mechanical relay



Dip Switch

- Dip switch
- Rotary switch
- Slide switch
- Micro switch



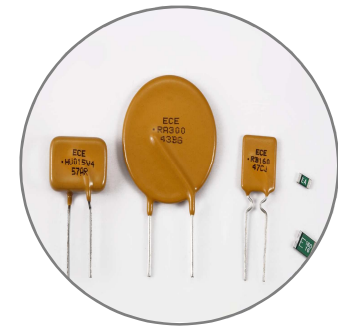
Terminal block

- Eurostyle
- Plug in
- Screwless
- High Power
- Wire to PCB
- Wire to Wire



Connector

- FPC
- Board to wire
- Board to board
- I/O & Battery
- Machine pin socket
- USB / EPJ / Others



Resettable Fuse

- Radial Leaded
- Axial Leaded
- Surface Mount



Corporate Products

ECE Brand / NEOCENE Brand for stepping motor



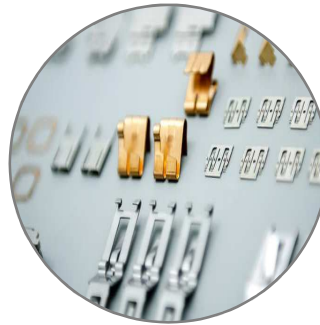
Inductor

- Inductor
- Beads
- Power choke



Stamping

- Lead Frame for
- Discrete devices
 - Integrated Circuit
 - Photoelectric Products



Stamping

- High precision electronic components



Stepping motor

- OD: 15~55mm
- Step Angle: 1.8~18°
- Shaft OD: 1.5~6.35Ø



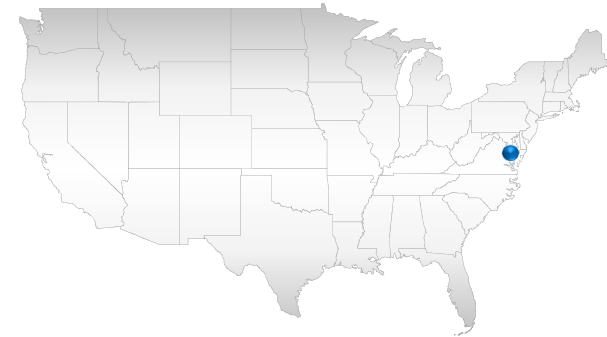
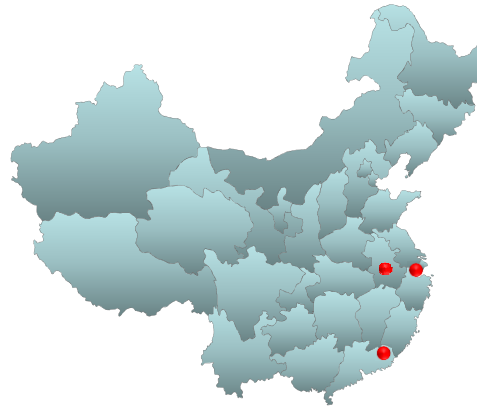
Industrial Control Switch

- Pushbutton type
- Selector type
- Emergency type



Our Location

■ Floor space



Taiwan

- Headquarter
- Factory 1 9,000 m²
- Factory 2 4,000 m²
- Factory 3 27,000 m²
- Taipei office

China

- Suzhou factory 24,700 m²
- Anhui factory 30,000 m²
- Shenzhen office

U.S.A.

- USA office / warehouse in NJ



Applications



Industrial Control / Instrument Equipment

Programmable Logic Controller / CNC controller



EXCEL CELL ELECTRONIC CO., LTD.

ECE[®] Industrial Control / Instrument Equipment

- **Industrial PC(Human Machine Interface) / POS system**



ECE[®] Industrial Control / Instrument Equipment

Robot Control / Robot Arm



EXCEL CELL ELECTRONIC CO., LTD.



Consumer Electronic and Household Electronic

Smart HVAC System





Consumer Electronic and Household Electronic

Kitchen Appliance / Home Appliance Electronic



EXCEL CELL ELECTRONIC CO., LTD.



Automotive Electronic Industry

Driving Recorder & Navigation



EXCEL CELL ELECTRONIC CO., LTD.



Automotive Electronic Industry

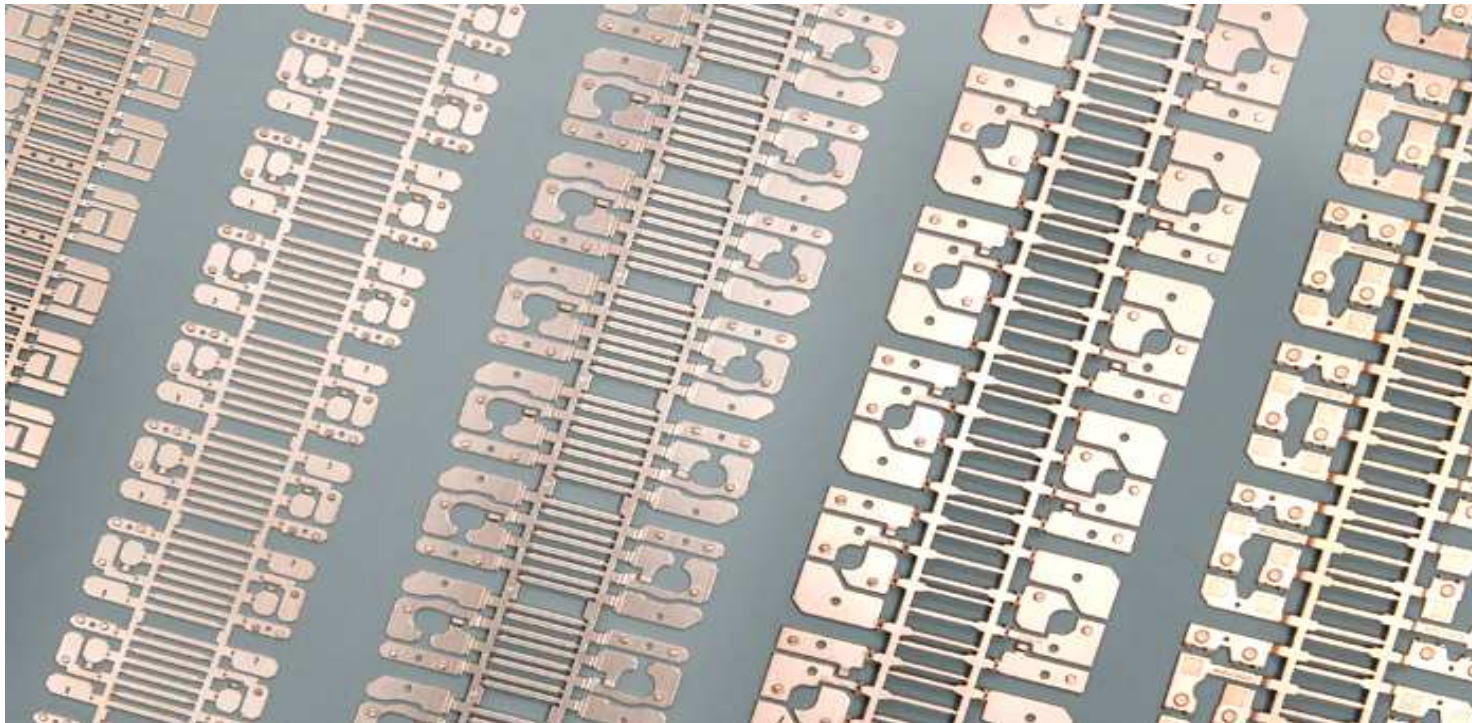
Automobile safety / In-car Entertainment



EXCEL CELL ELECTRONIC CO., LTD.

Lead Frame of Semiconductors for Discrete **ECE**[®] Devices / Integrated Circuit

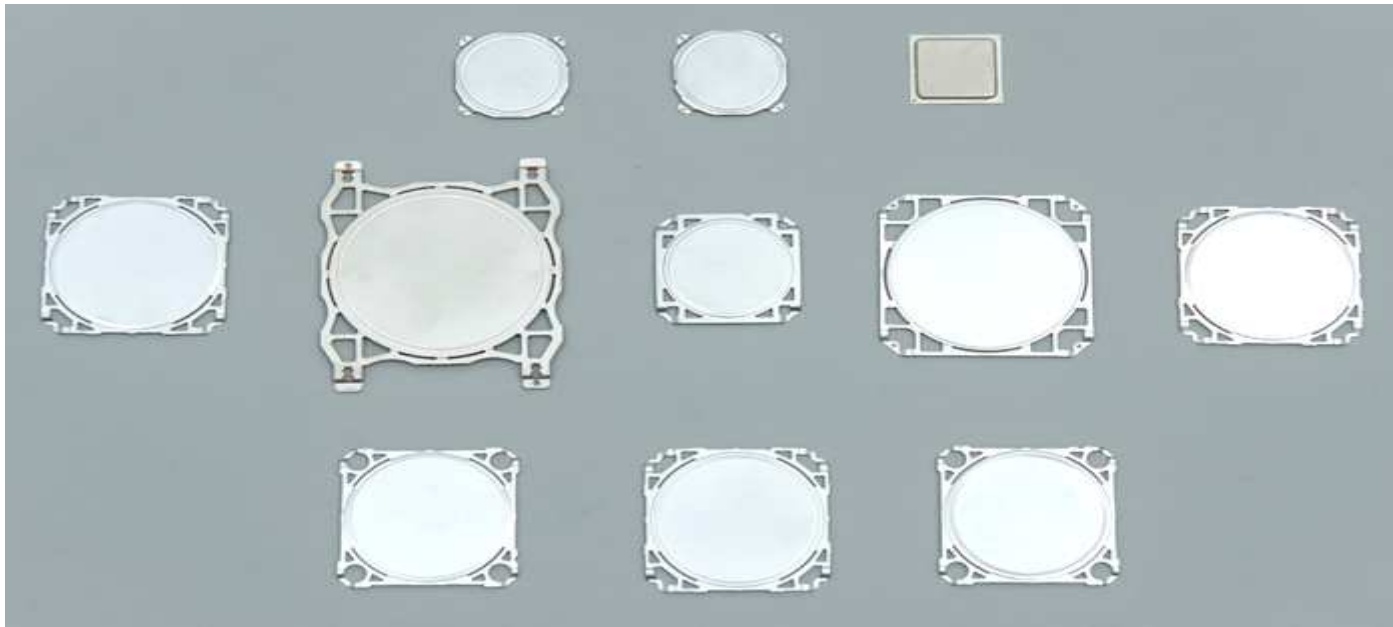
- applications include signals, voltage regulation, voltage amplification, switch, and other functions.





Heat Spreader for BGA

- We have developed various types of heat spreaders upon various specifications required by market needs. We can also provide high precision heat spreaders with various plating layers to respond to different requirements of surface treatments.





Stepping motor

- application in Printer, Scanner, Multi-function printer, Label printer and Receipt printer.



1Q2020 Financial Results



EXCEL CELL ELECTRONIC CO., LTD

Consolidated Statements of Comprehensive Income -YoY

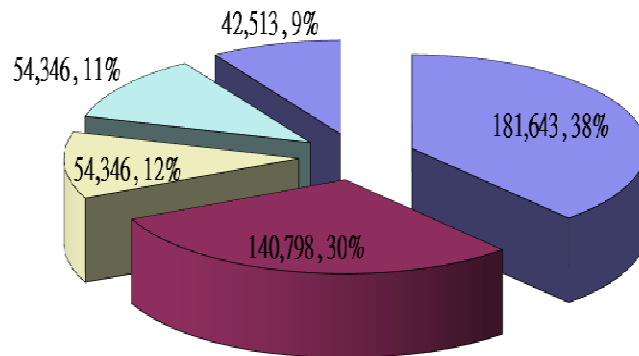
unit:NT thousands

Item	2021 Jan~Mar	%	2020 Jan~Mar	%	Change AMT	Change %
Net Operating Revenues	473,101	100.00	386,797	100.00	86,304	22.3
Cost of Good Sold	398,426	84.22	308,295	79.70	(90,131)	29.2
Gross Profit	74,675	15.78	78,502	20.30	(3,827)	(4.9)
Operating Expenses	82,542	17.45	80,848	20.90	(1,694)	2.1
Operating Income	(7,867)	(1.66)	(2,346)	(0.61)	(5,521)	235.3
Net Non-Operating Income and Expenses	16,797	3.55	75,244	19.45	(58,447)	(77.7)
Net Income before Tax	8,930	1.89	72,898	18.85	(63,968)	(87.8)
Income Tax Expense	(386)	(0.08)	5,178	1.34	5,564	(107.5)
Net Income	9,316	1.97	67,720	17.51	(58,404)	(86.2)
Net Income Attributable to the Stockholders of the Parent	8,759		67,652		(58,893)	(87.1)
EPS(NTD)	0.08		0.61			

EXCEL CELL ELECTRONIC CO., LTD.

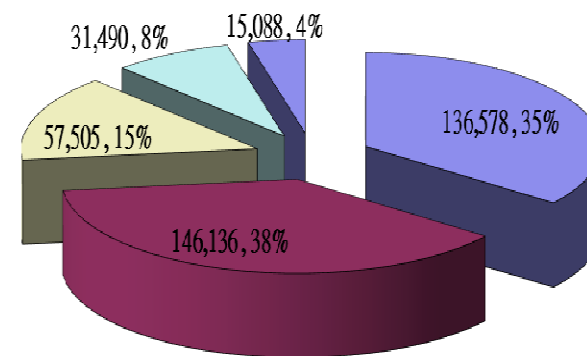


2021.Q1 Sales Breakdown by Operating Segments



- Stamping & Molding Division
- Electromechanical Component Division
- Relay(Goodsky) Electric
- STEPPING MOTORS
- Other

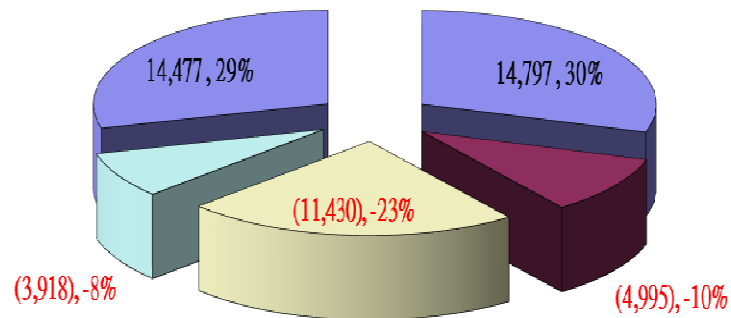
2020.Q1 Sales Breakdown by Operating Segments



- Stamping & Molding Division
- Electromechanical Component Division
- Relay(Goodsky) Electric
- STEPPING MOTORS
- Other

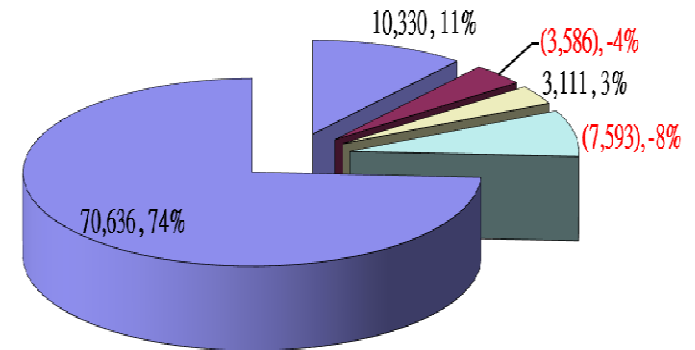


2021.Q1 Net Income Breakdown by Segments



- Stamping & Molding Division
- Electromechanical Component Division
- Relay(Goodsky) Electric
- STEPPING MOTORS
- Other

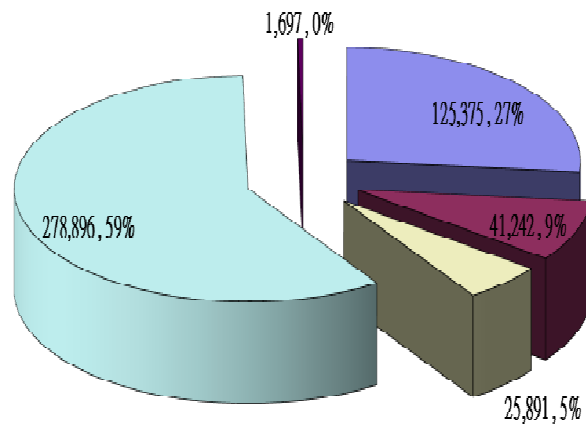
2020.Q1 Net Income Breakdown by Segments



- Stamping & Molding Division
- Electromechanical Component Division
- Relay(Goodsky) Electric
- STEPPING MOTORS
- Other

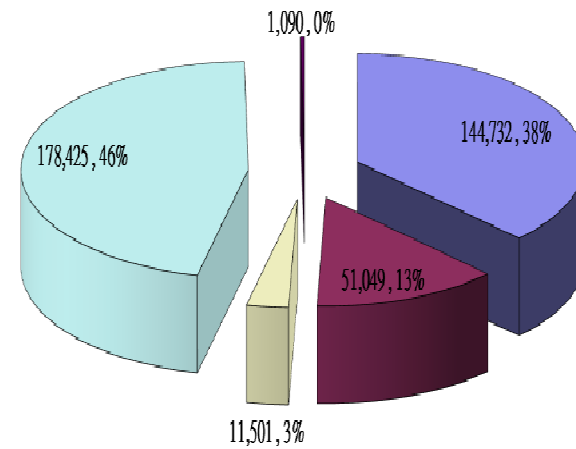


2021.Q1 Sales Breakdown by Geography



Taiwan Europe America Asia Other

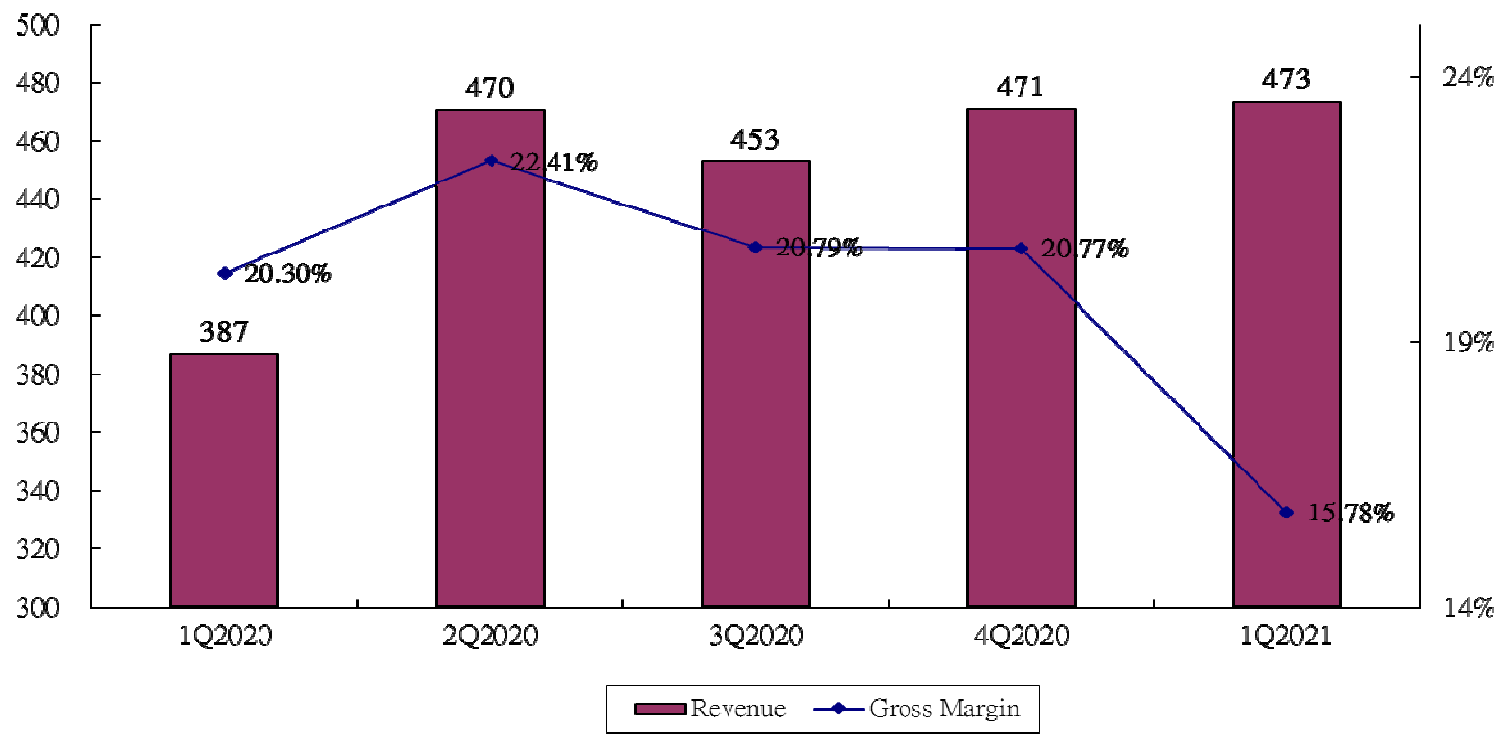
2020.Q1 Sales Breakdown by Geography



Taiwan Europe America Asia Other

ECE[®] Revenue & Gross Margin

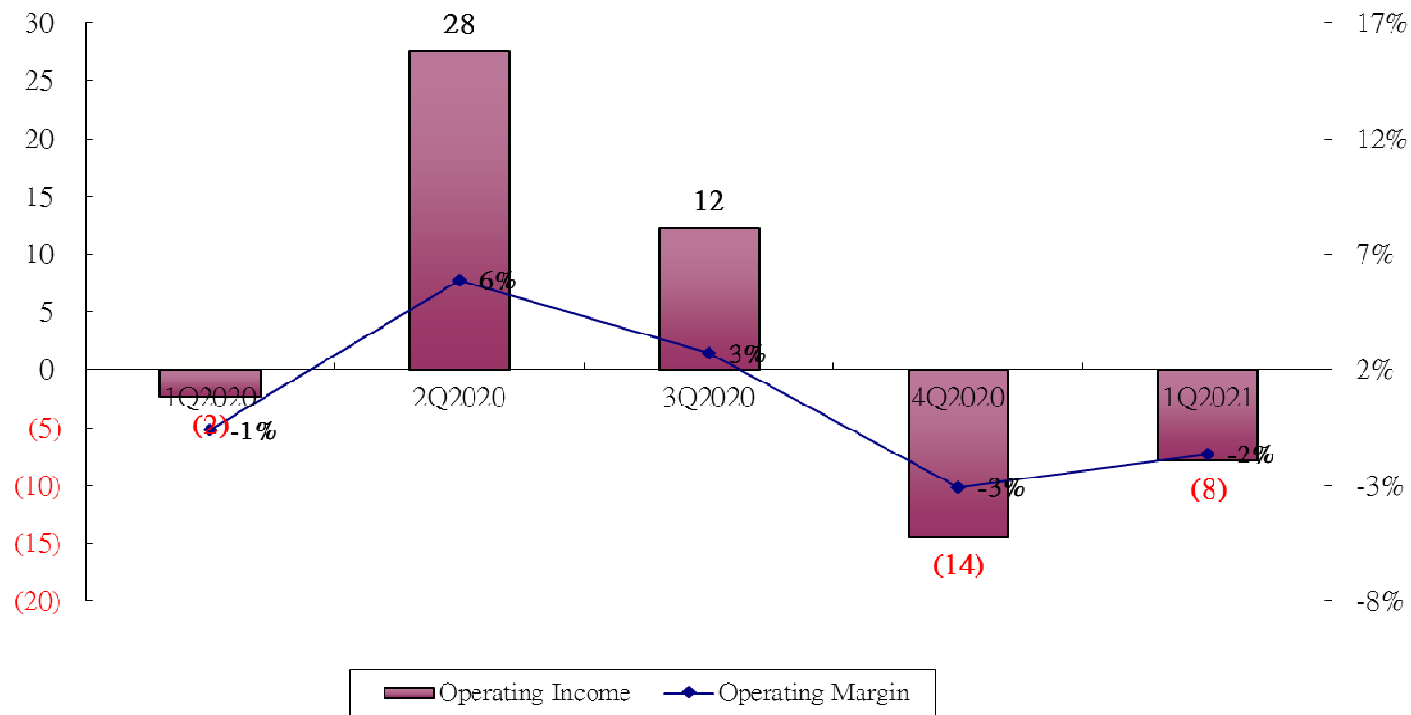
(NT\$ million)





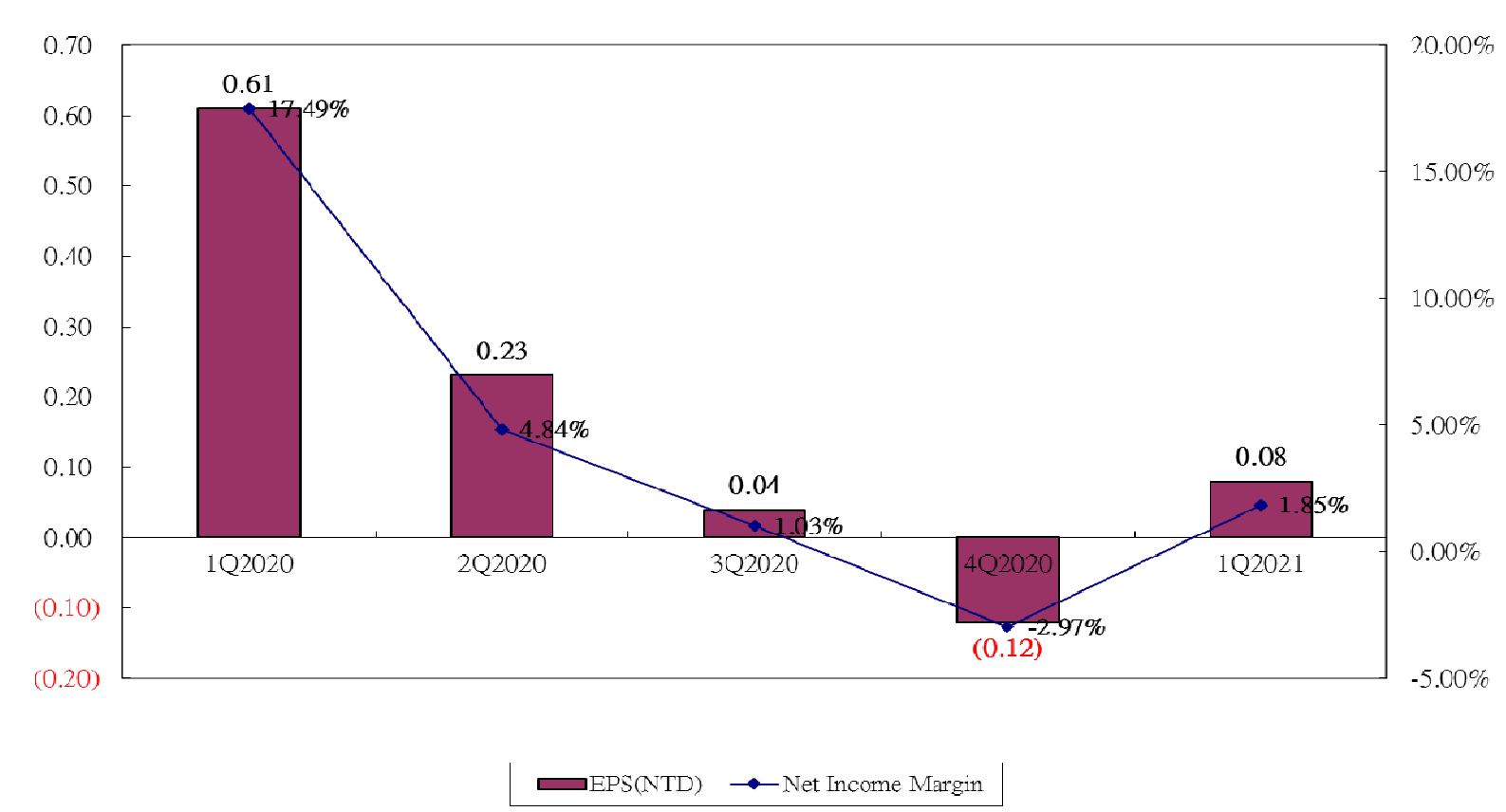
Operating Income & Operating Margin

(NT\$ million)



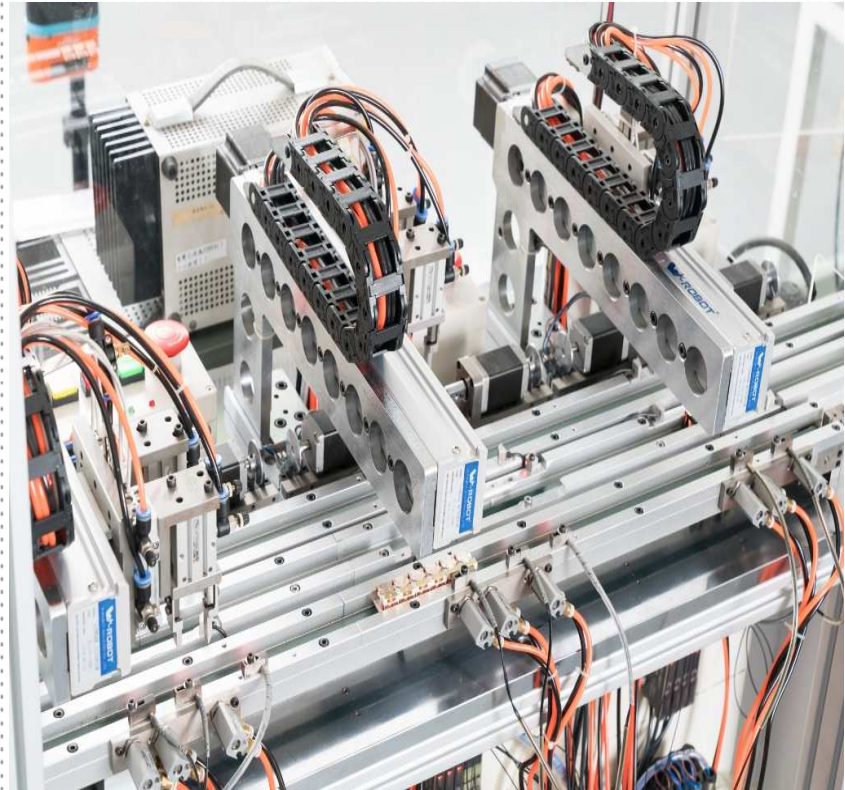


EPS& Net Income Margin



EDGE[®]

Automatic is the gateway to success



EXCEL CELL ELECTRONIC CO., LTD.



Q & A

ECE[®]

Thank you! **ECE**

EXCEL CELL ELECTRONIC CO., LTD.