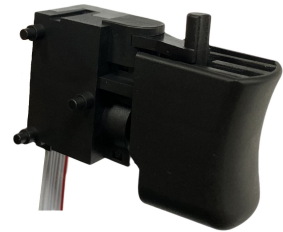


TRIGGER SWITCH FOR POWERTOOL EVS M01 SERIES

UL pending

FEATURES

- Miniature Compact Size 15mm(W).
- Double Twin contacts designed shock resistance (patented).
- High dust-tight structure (patented).
- Stepless potentiometer.
- integrated Forward/Reverse box of signal control.
- Flat cable designed for wire saving.



SPECIFICATIONS

1. ELECTRICAL

● Contact rating	0.1, 36VDC / 0.2A, 24VDC
● Circuit schematic	<p>The schematic diagram shows a potentiometer (VR) with terminals 4, 6, and 5. Terminal 4 is connected to terminal 6. Terminal 6 is connected to terminal 5. Terminal 5 is connected to terminal 1. Terminal 1 is connected to terminal 7. Terminal 7 is connected to terminal 2. Terminal 2 is connected to terminal 3. A trigger switch is connected between terminals 1 and 7. A reversing signal is connected between terminals 2 and 3.</p>

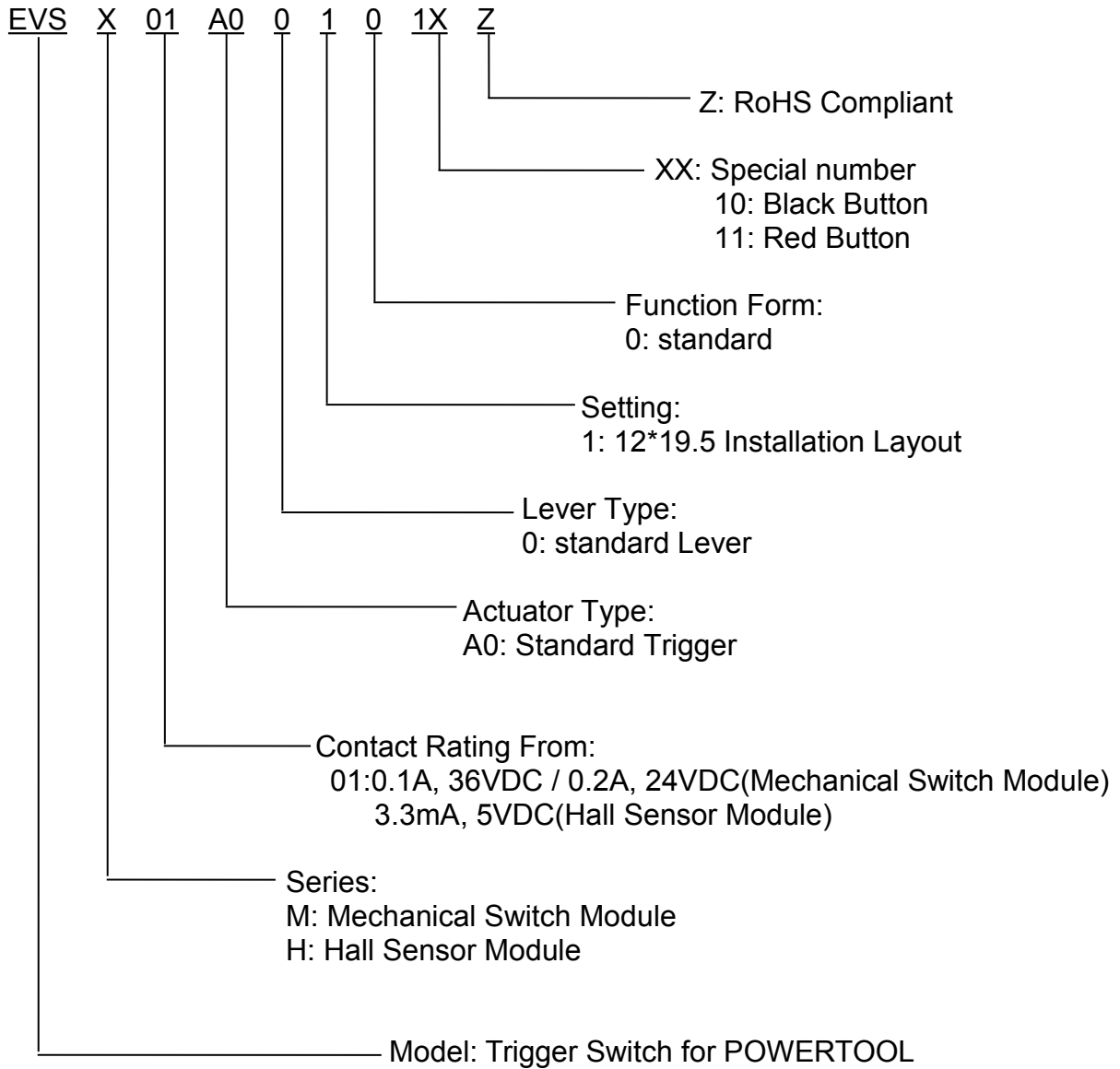
2. MECHANICAL

● Switch travel diagram	<p>The graph shows the initial resistance (KΩ) versus trigger travel (mm). The y-axis ranges from <math><3K\Omega</math> to <math>30\pm 10K\Omega</math>. The x-axis ranges from 0 to 8.0 mm. The graph is divided into four stages: A (Main switch ON), B (VR Start), C (VR End), and D (Total Travel). The resistance is constant at <math><3K\Omega</math> until stage A, then increases linearly through stage B to stage C, and remains constant at <math>30\pm 10K\Omega</math> through stage D.</p>
● Operating force	20N Max.



Switch

■ PART NUMBERING SYSTEM



■ DIMENSIONS

UNIT:mm

