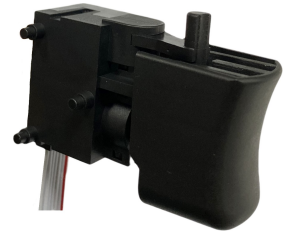


TRIGGER SWITCH FOR POWERTOOL EVS M01 SERIES

FEATURES

- Miniature Compact Size 15mm(W)
- Double Twin contacts designed shock resistance (patented)
- High dust-tight structure (patented)
- Stepless potentiometer
- integrated Forward/Reverse box of signal control
- Flat cable designed for wire saving



SPECIFICATIONS

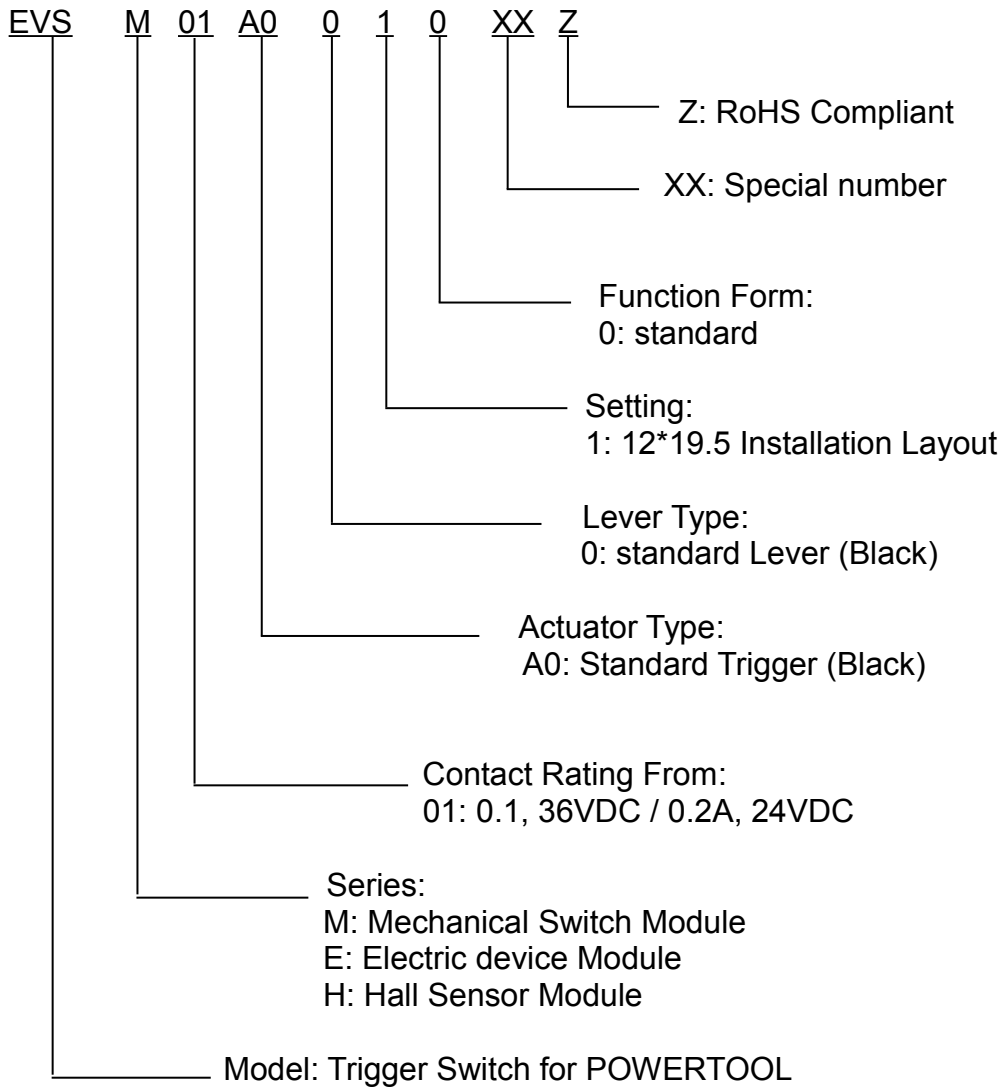
1. ELECTRICAL

● Contact rating	0.1, 36VDC / 0.2A, 24VDC
● Circuit schematic	

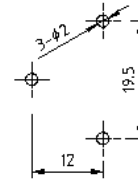
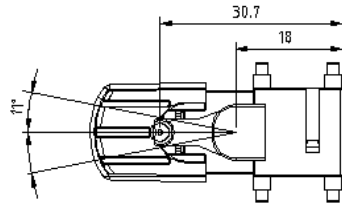
2. MECHANICAL

● Switch travel diagram	<p>Initial Resistance(Ω)</p> <p>Trigger Travel (mm)</p> <p>0 15±0.3 25±0.4 65±0.5 8±0.5</p> <p>A: Main switch ON B: VR Start C: VR End D: Total Travel</p>
● Operating force	20N Max.

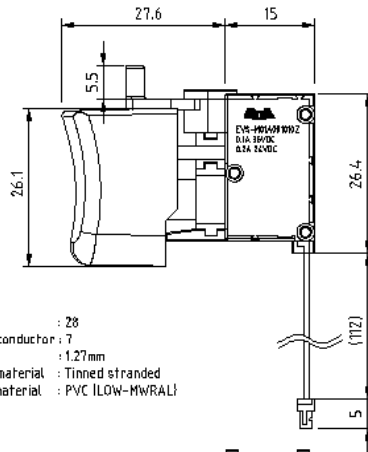
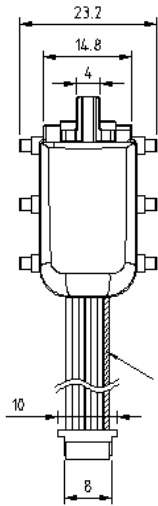
■ PART NUMBERING SYSTEM



■ DIMENSIONS UNIT:mm



Installation Layout



- FLAT CABLE :
- 1. AWG : 28
 - 2. Number of conductor : 7
 - 3. Pitch : 1.27mm
 - 4. Conductor material : Tinned stranded
 - 5. Insulation material : PVC (LOW-MWRALI)

