



## ECS - INDUSTRIAL CONTROL SWITCH EMERGENCY STOP (Ø16 TYPE)

### 1. FEATURES

- Pushlock turn reset function.
- Faston terminal #110 makes for easy connections.
- IP65 waterproof type. It is designed for liquid and oil prevention and enables to be used in different environment.
- In accordance with the standards of UL, cUL, CE, CCC, and TUV. (Pending)
- Quick and easy assembly, just install into the mounting hole and lock the nut.


### 2. SPECIFICATIONS

#### 2-1. ELECTRICAL

2-1-1. Rated thermal current	5A
2-1-2. Rated insulation voltage	250V
2-1-3. Utilization category	AC-15 or Ue 125V / Ie 3A Ue 250V / Ie 1.5 A DC-13 or Ue 30V / Ie 1A Ue 125V / Ie 0.22 A Ue 250V / Ie 0.1A
2-1-4. Minimum switching capacity [ref.]	5V DC/AC, 1mA
2-1-5. Dielectric strength	2500V AC, 1 min.
2-1-6. Insulation resistance	100MΩ min. at 500V DC
2-1-7. Contact resistance	50mΩ max. (initial)

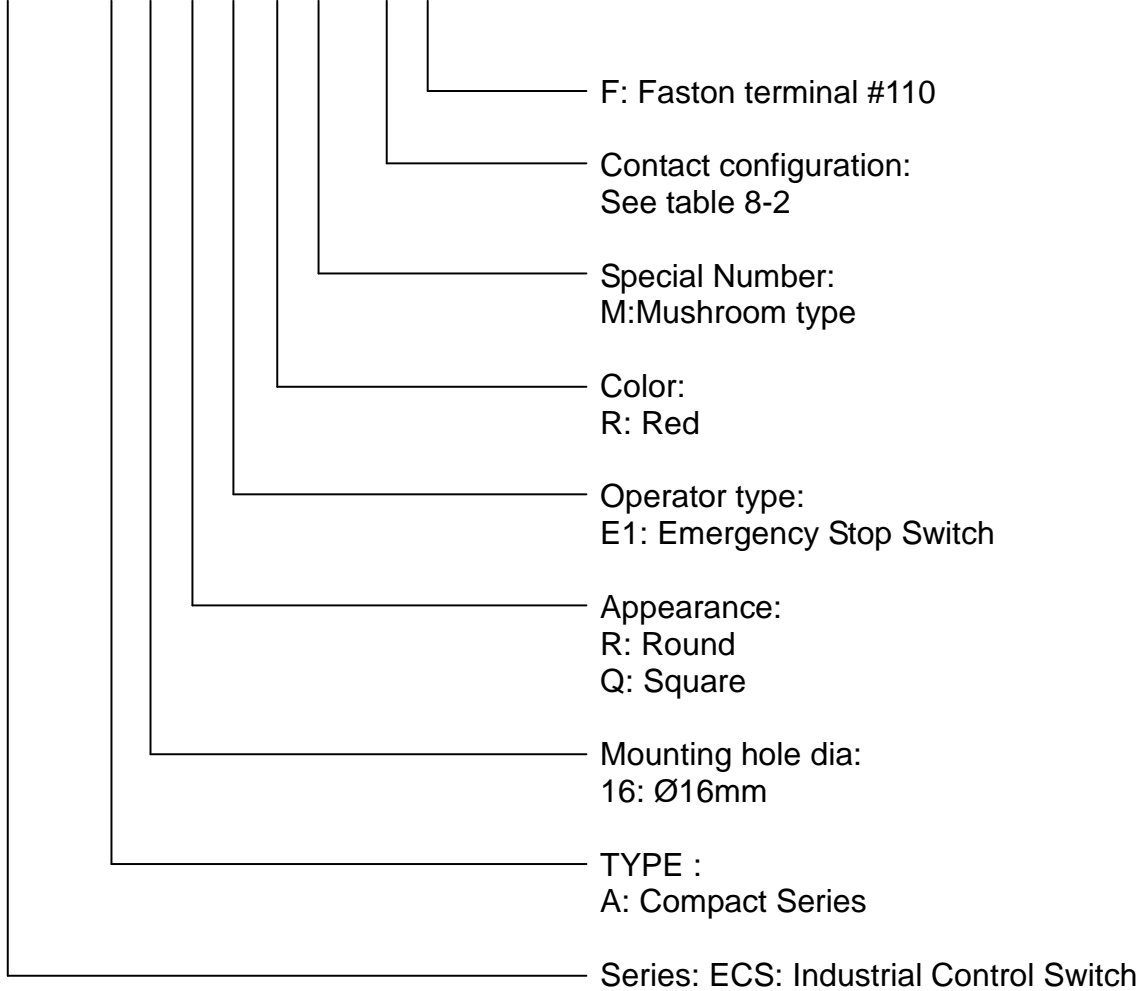
#### 2-2. MECHANICAL AND ENVIRONMENTAL


2-2-1. Operating temperature	-25°C ~ +60°C (no freezing)
2-2-2. Storage temperature	-40°C ~ +80°C (no freezing)
2-2-3. Humidity	45% ~ 85% RH(no condensation)
2-2-4. Degree of protection	IP65 (from the front of the panel)
2-2-5. Degree of contamination	3 (IEC 60947-5-1)
2-2-6. Vibration resistance	10~500Hz single amplitude 0.35mm acceleration 50 m/s <sup>2</sup>
2-2-7. Shock resistance	150 m/s <sup>2</sup> (operating extremes) 1000 m/s <sup>2</sup> (damage limits)
2-2-8. Mechanical Life	100,000 operations (900 operations/hr)
2-2-9. Electrical Life	100,000 operations (900 operations/hr)
2-2-10. Operation Force (from 2b)[ref.]	10N
2-2-11. Operation travel	over 4 mm
2-2-12. Connection type	Faston terminal 2.8x0.5 mm
2-2-13. Direct opening action	Direct opening mechanism of NC contact to open the circuit⊖

 <b>EXCEL CELL ELECTRONIC CO., LTD.</b>	<b>NO.</b>	<b>A31251</b>		
	<b>SPECIFICATION</b>	<b>Edition</b>	<b>1</b>	<b>Page</b>

3. PART NUMBERING SYSTEM

ECS – X XX R XX R X – XX F



 <b>EXCEL CELL ELECTRONIC CO., LTD.</b>	<b>NO.</b>	<b>A31251</b>		
	<b>SPECIFICATION</b>	<b>Edition</b>	<b>1</b>	<b>Page</b>

#### 4. INSTALLATION

##### 4-1. Panel thickness

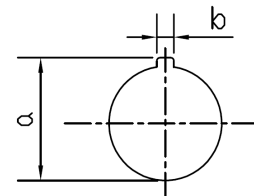
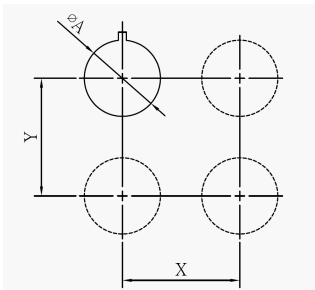
- The panel thickness must be 1 to 4 mm.
- Take into consideration about the thickness of accessories (such as name plate, switch guard, etc.) while using.

##### 4-2. Panel cutout

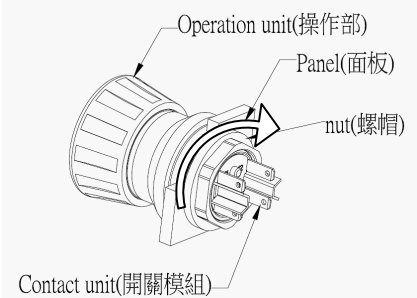
- Cutout diameter and distance

Unit: mm

	<b>16R</b>
$\varnothing A$	16.2 $\begin{matrix} +0.2 \\ -0 \end{matrix}$
X	40
Y	40
a	17.9 $\begin{matrix} +0.2 \\ -0 \end{matrix}$
b	1.7 $\begin{matrix} +0.2 \\ -0 \end{matrix}$



##### ■ Panel installation

	<ol style="list-style-type: none"> <li>1. Place the operation unit through panel mounting hole.</li> <li>2. Install the nut by using tightening tool.</li> <li>3. Make sure the operation unit fix on the panel firmly.</li> </ol>
---	--

#### 5. PACKAGING


5-1. ECS product is packed 1 pcs/bag, 10 bags per box.

##### 5-2. Label information

- |                   |                         |
|-------------------|-------------------------|
| (1) Part number   | (6) QC inspection stamp |
| (2) Lot number    | (7) Company mark        |
| (3) Quantity      | (8) Company name        |
| (4) Tester number | (9) Notice              |
| (5) Date code     |                         |

#### 6. DIMENSIONS

See attached drawings

 <b>EXCEL CELL ELECTRONIC CO., LTD.</b>	<b>NO.</b>	<b>A31251</b>		
	<b>SPECIFICATION</b>	<b>Edition</b>	<b>1</b>	<b>Page</b>

7. OPTIONS

7-1. For other accessories (name plate, control box, and etc.), please refer to accessory part in the catalog.

8. REMARK

8-1. Safety Certification

Safety Standard	Certification
UL-508	Pending
CSA C22.2 NO.14	
EN60947-5-1	Pending
EN60947-5-5 (Emergency Stop Switch)	
CCC GB14048.5	Pending

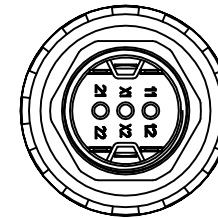
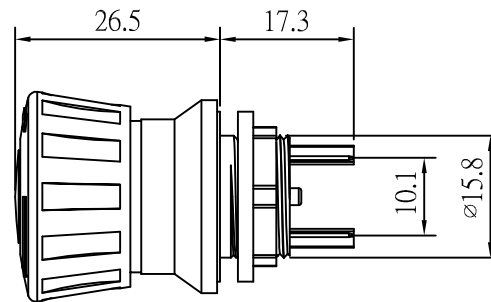
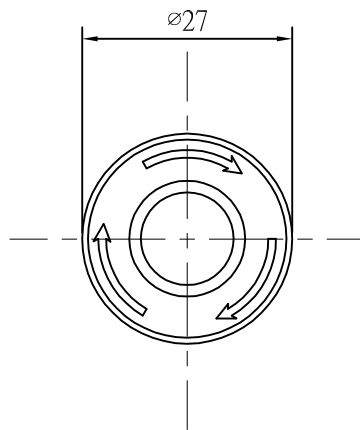
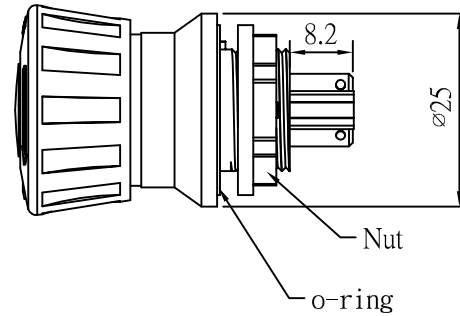
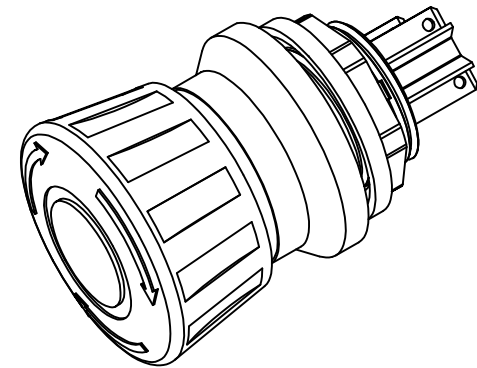
8-2. Contact Configuration

Code	Contact blocks	
	NO	NC
01	0	1
11	1	1
02	0	2

8-3. CAUTION

- To prevent injury, this device must be disconnected from all power sources prior to wiring and other initiating work.
- Use tightening tool when installing the operation unit in the panel cutout. Do not use pliers and do not tighten excessively, otherwise the operation unit may be damaged.

# ECS-A16RE1RXX-XXF



**NOTE:**

- 1.CONNECT TYPE:  
Faston terminals #110 2.8 x 0.5mm
- 2.Panel thickness 1~4mm.
- 3.Operation travel : over 4mm
- 4.Contact configuration :

Code	Contact black	
	NO	NC
01	0	1
11	1	1
02	0	2

NO.	DETAILS	ALTERED BY	DATE	NORMAL TOLERANCE		CHECK	DESIGN	DRAWN	PART NUMBER	PART NAME		
				RANGE	TOLERANCE							
				0-1	±0.1	Gary Kuo	Alice Lin	Alice Lin	UNIT	MM (INCH)		
				1-4	±0.3				SCALE	1:1	TYPE	Emergency
				4-16	±0.5				SIZE	A4	FILE NAME	769A16RE1RXXXXFA.DWG
				16-63	±0.8				PROJECTION		EDITION	A
				63-250	±1.0				EXCEL CELL ELECTRONIC CO., LTD.			
				X.	±5°							
				X.X	±2.5°							