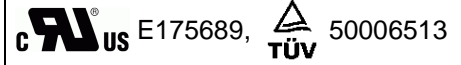




ECE —
The Name You Can Trust!

RADIAL LEADED PTC AN MODEL



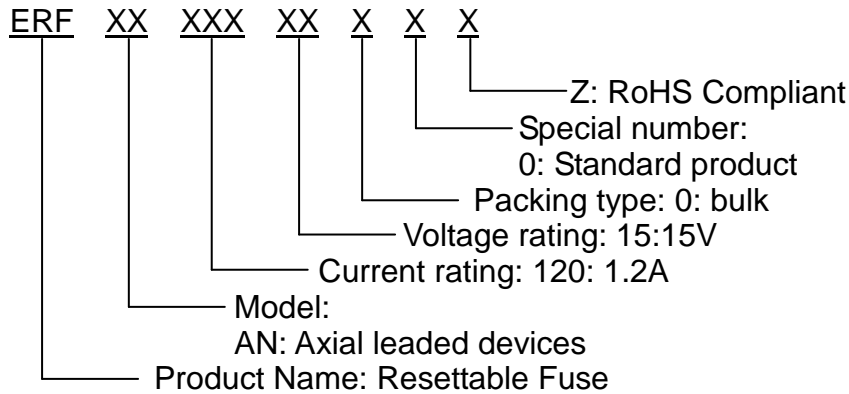
■ FEATURES

- Axial Leaded, low profile, solid state
- Full compatible with current industry standards
- Weldable nickel terminals
- Operation current: 1.2A~4.2A
- Maximum voltage: 15V & 30V
- Temperature range: -40°C to 85°C
- Bulk packaging on most models

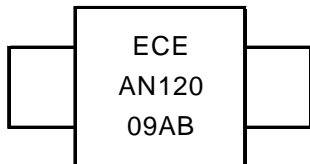
■ APPLICATIONS

- Rechargeable battery packs protection
- Lithium cell and battery packs
- Provides overcurrent protection with 125°C trip temperature

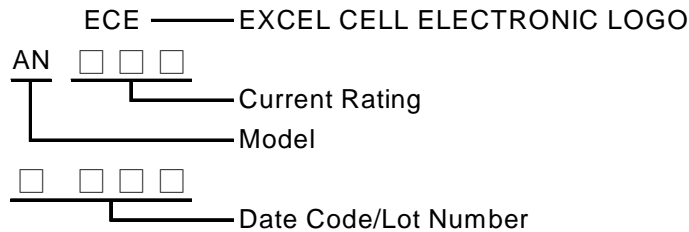
■ PART NUMBERING SYSTEM



■ Marking system



Example



■ Electrical characteristics(23°C)

Part Number	Hold Current	Trip Current	Rated Voltage	Maximum Current	Typical Power	Resistance Tolerance		
	I_H , A	I_T , A	V_{MAX} , V _{dc}	I_{MAX} , A	P_d , W	R_{MIN}	R_{MAX}	$R1_{MAX}$
						Ω	Ω	Ω
AN120	1.2	2.7	15	100	1.2	0.085	0.160	0.220
AN175	1.75	3.8	15	100	1.5	0.050	0.090	0.120
AN200	2.0	4.4	30	100	1.9	0.030	0.060	0.100
AN350	3.5	6.3	30	100	2.5	0.017	0.031	0.050
AN420	4.2	7.6	30	100	2.9	0.012	0.024	0.040

I_H =Hold current-maximum current at which the device will not trip at 23°C still air.

I_T =Trip current-minimum current at which the device will always trip at 23°C still air.

V_{MAX} =Maximum voltage device can withstand without damage at rated current.

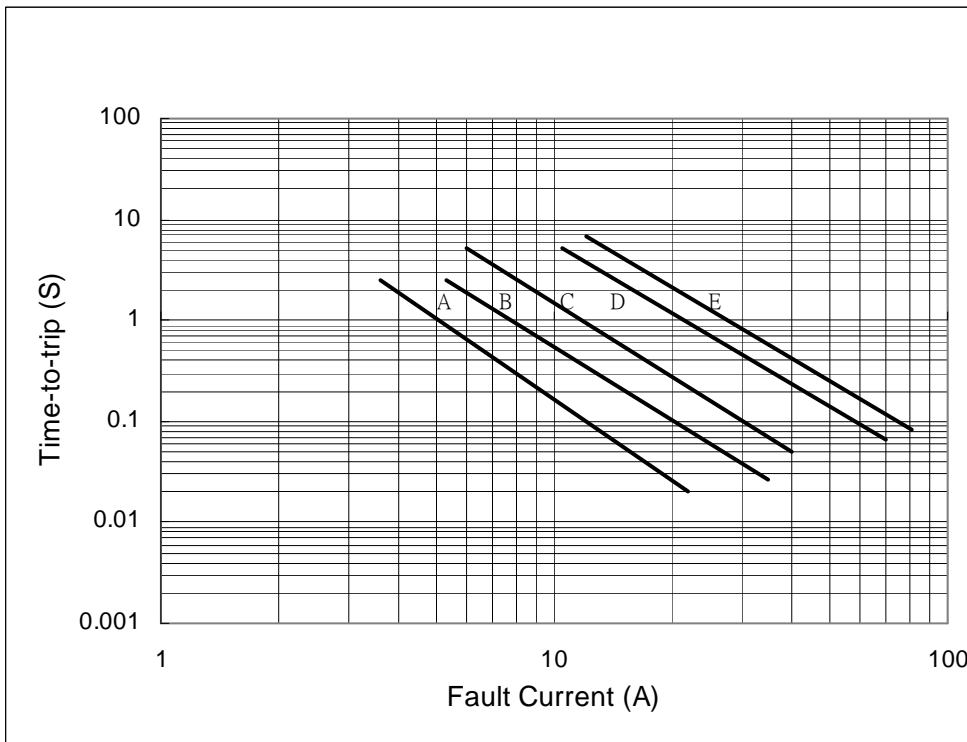
I_{MAX} = Maximum fault current device can withstand without damage at rated voltage (V max).

P_d =Typical power dissipated from device when in the tripped state in 23°C still air environment.

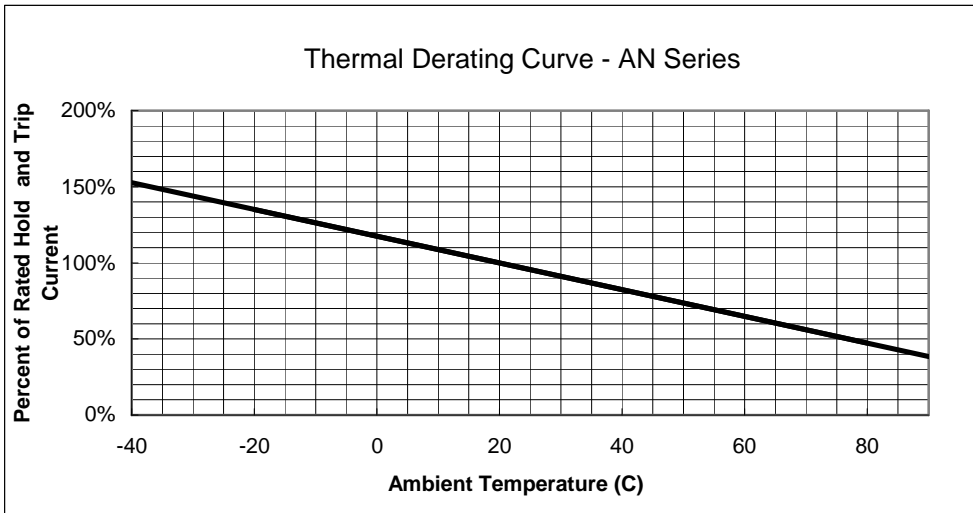
R_{MIN} =Minimum device resistance at 23°C.

$R1_{MAX}$ =Maximum device resistance at 23°C 1 hour after tripping .

■ Typical time-to-trip-at 23°C

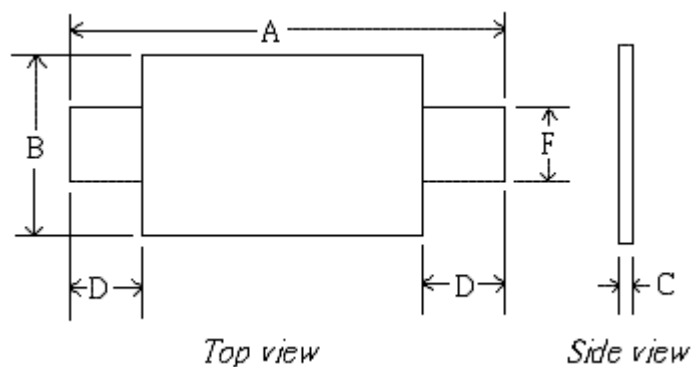


■ Thermal Derating Curve



■ AN Product Dimensions (UNIT: mm)

Part Number	A		B		C		D		F	
	Min	Max	Min	Max	Min	Max	Min	Max	Min	Max
AN120	19.9	22.1	4.9	5.2	0.6	1.0	5.5	7.5	3.9	4.1
AN175	20.9	23.1	4.9	5.2	0.6	1.0	4.1	5.5	3.9	4.1
AN200	21.3	23.4	10.2	11.0	0.5	1.1	5.0	7.6	4.8	5.4
AN350	28.4	31.8	13.0	13.5	0.5	1.1	6.3	8.9	6.0	6.6
AN420	30.6	32.4	12.9	13.6	0.5	1.1	5.0	7.5	6.0	6.7



■ Standard Package for Reference

P/N	Pcs/Bag	P/N	Pcs/Bag	P/N	Pcs/Bag
AN120	1K	AN200	500	AN420	500
AN175	1K	AN350	500		