



## REED SENSOR ELS 4 SERIES

### ■ FEATURES

- Does not require power for operation.
- Omni-polar device - actuates with either pole of magnet.
- Surface mount design.
- Two magnetic sensitivity bands.

### ■ APPLICATIONS

- Security system
- Control equipment
- Automotive device

### ■ SPECIFICATIONS

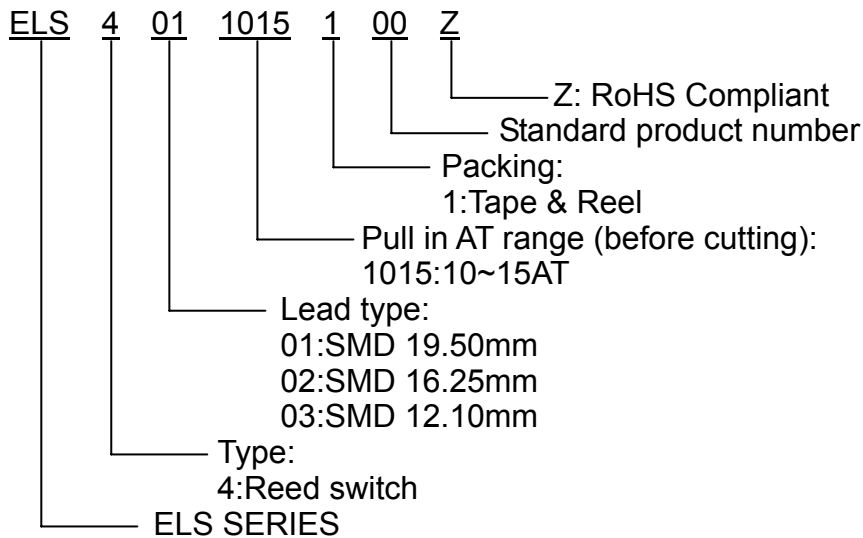
#### 1.ELECTRICAL CHARACTERISTICS

Lead Type	ELS401	ELS402	ELS403
Contact form	1A	1A	1A
Pull-in Value (AT range before cutting)	10~30AT	10~25AT	10~20AT
Drop-out Value	5AT min.	5AT min.	5AT min.
Contact resistance	100mΩ max.	120mΩ max.	200mΩ max.
Breakdown voltage	250Vdc min.	200Vdc min.	150Vdc min.
Insulation resistance	10 <sup>10</sup> Ω min.	10 <sup>9</sup> Ω min.	10 <sup>9</sup> Ω min.
Electrostatic capacitance	0.3pF max.	0.3pF max.	0.4pF max.
Contact rating	10W	10W	1W
Maximum switching voltage	200Vdc	100Vdc	24Vdc
Maximum switching current	0.5A	0.5A	0.1A
Maximum carry current	1.0A	0.5A	0.3A

## 2. OPERATING CHARACTERISTICS

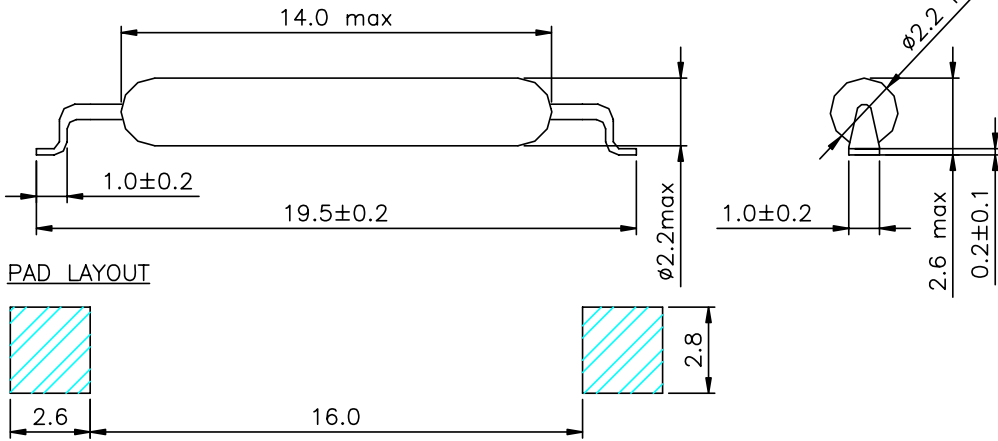
Lead Type	ELS401	ELS402	ELS403
Operate time	0.4ms max.	0.4ms max.	0.3ms max.
Bounce time	0.3ms max.	0.3ms max.	0.3ms max.
Release time	0.05ms max.	0.05ms max.	0.05ms max.
Shock resistance	100G	50G	30G
Vibration resistance	50G (10~2000Hz)	30G (10~2000Hz)	20G (10~2000Hz)
Temperature range	-40~+125°C	-40~+125°C	-40~+125°C
Solderability	245°C for 5 seconds	245°C for 5 seconds	245°C for 5 seconds
Life expectancy (5Vdc-1mA, Resistive load)	1x10 <sup>8</sup>	1x10 <sup>8</sup>	1x10 <sup>7</sup>

### ■ PART NUMBER SYSTEM

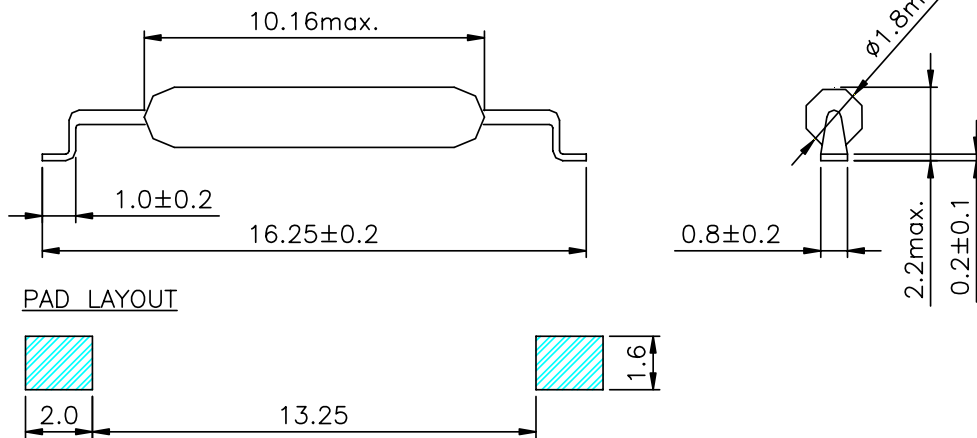


## ■ DIMENSIONS UNIT:mm

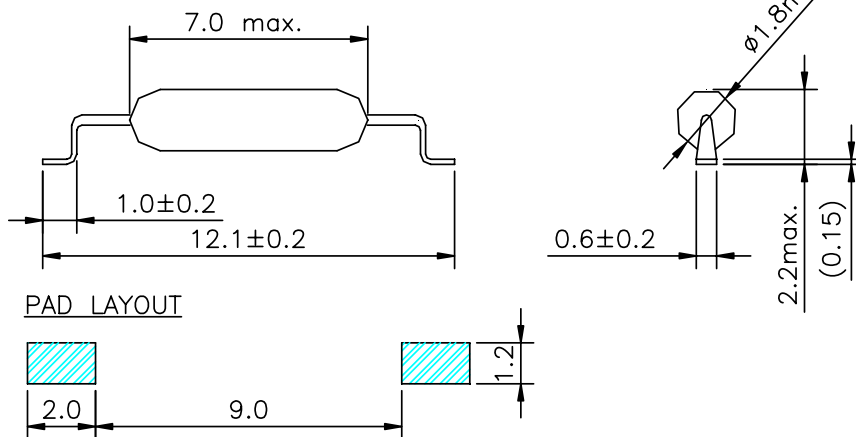
ELS401 SERIES



ELS402 SERIES

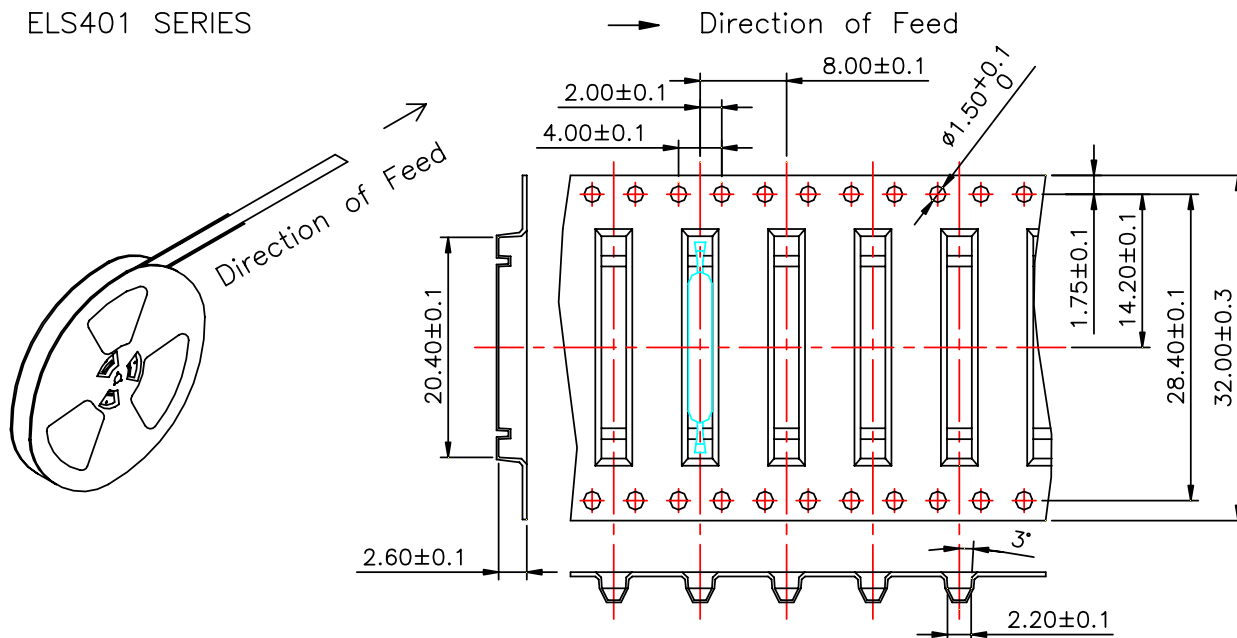


ELS403 SERIES



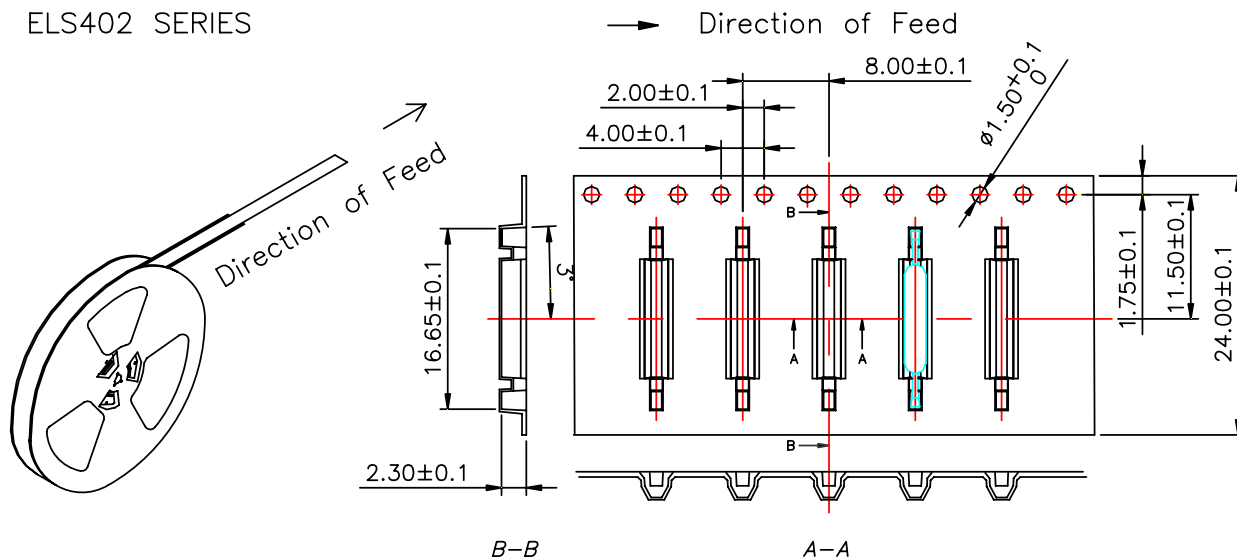
## ■ Tape and reel specifications Dimensions UNIT:mm

ELS401 SERIES



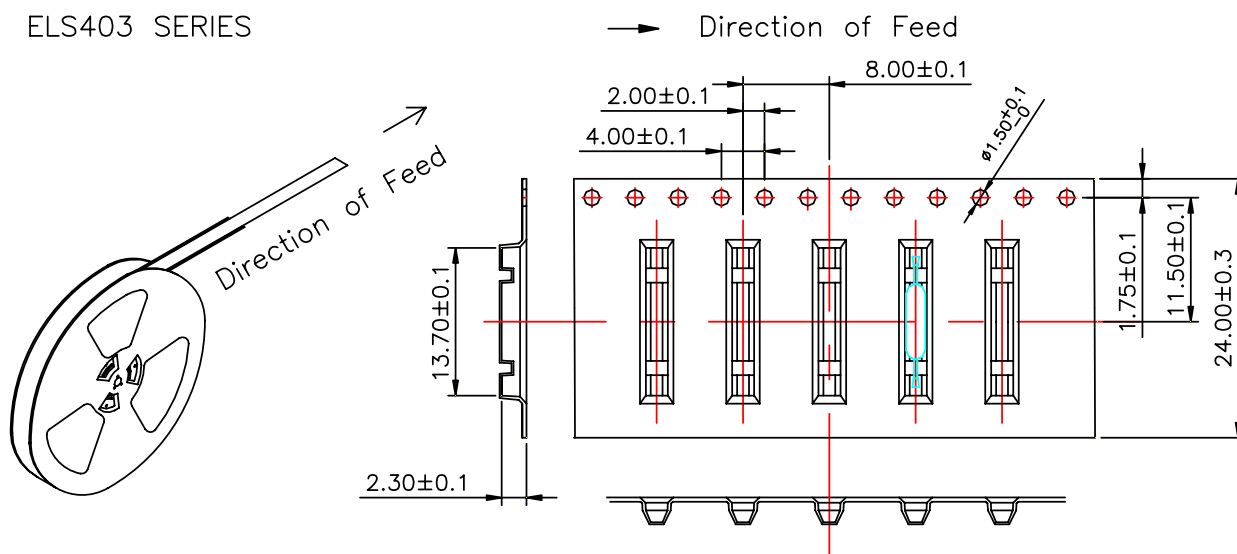
1. 10 sprocket hole pitch cumulative tolerance  $\pm 0.2\text{mm}$
2. Material: Black Conductive Polystyrene Sheet
3. All dimensions meet EIA-481 requirements
4. Thickness:  $0.4 \pm 0.05\text{mm}$
5. Component load per 13" Reel: 3000 pcs.

ELS402 SERIES



1. 10 sprocket hole pitch cumulative tolerance  $\pm 0.2\text{mm}$
2. Material: Black Conductive Polystyrene Sheet
3. All dimensions meet EIA-481 requirements
4. Thickness:  $0.4 \pm 0.05\text{mm}$
5. Component load per 13" Reel: 3500 pcs.

## ELS403 SERIES



1. 10 sprocket hole pitch cumulative tolerance  $\pm 0.2\text{mm}$
2. Material: Black Conductive Polystyrene Sheet
3. All dimensions meet EIA-481 requirements
4. Thickness:  $0.4 \pm 0.05\text{mm}$
5. Component load per 13" Reel: 3000 pcs.